



---

**USER INSTRUCTION MANUAL**  
**BRUTE WINCH**

**THESE INSTRUCTIONS APPLY TO THE FOLLOWING MODELS:**

AFT730020, AFT730040, AFT730042, AFT730042SS,  
AFT730120 and AFT730135



II 2G  
Ex h IIc T6 Gb  
EN 80079-36:2016  
EN 80079-37:2016

Please read and understand the manufacturer's instructions for each component or part of the complete system. Manufacturer's instructions must be followed for proper use, care, and maintenance of this product. These instructions must be retained and be kept available for the user's reference at all times. Alterations or misuse of this product, or failure to follow instructions, may result in serious injury or death.

**Note:** The user is advised to keep this user instructions document for the life of the product.

Brute winches are classed as rescue lifting devices by the European Machinery Directive 2006/42/EC and have been shown to comply with this Directive through the Harmonized European Standard EN1496 Class A [AFT730020 & AFT730040].

## 1. PERFORMANCE AND LIMITATIONS OF USE:

These Winches have been tested in accordance with EN 1496:2017 and have achieved the following performance levels:

EN 1496:2017 test	RESULT/COMMENT
4.2 Ergonomics	Force applied to handle to lift 136Kg is 140kN
4.3 Material & constructions	No sharp edges or burrs that could add additional risk to user
4.5 Dynamic Performance & function test for class B	136 Kg mass held, Peak Arrest force : 3.0 kN, Arrest distance : 2.17m following Dynamic performance, 204Kg & 30Kg could be raised and lowered on lifting device. On release of handle the arrest distance : 0mm
4.6 Static strength	13.4kN sustained for 3 mins without failure
4.7 Corrosion Resistance	Corrosion test in accordance with ISO 9227:2012, 48 Hrs (Pass)

## 2. TECHNICAL SPECIFICATIONS:

### Winch :

Ref No.	AFT730020
Length	20m

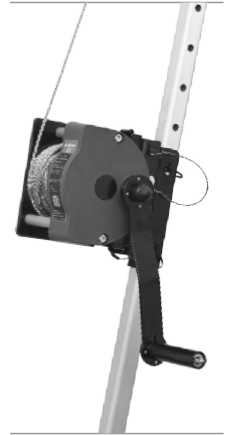
- To be used for raising or lowering of a person or material into confined spaces.
- Comes with pre-installed mounting plate compatible with the mounting bracket fixed on the leg of the Tripod and can also be fitted to Extreme Davit Systems.
- Maximum lifting load capacity as per EN 1496:140 kgs as per machinery directive 2006/42/EC:250 kgs
- Consists of Screw Locking Karabiner (AFC601100) as a Connector.
- Conforms to EN 1496:2017 (Class A).
- Must be used with a Retractable Fall Arrest Block when using as a Personal Winch raising or lowering.
- Comes with Galvanized Steel wire rope of dia 4.5mm.
- Also available with the Stainless Steel Wire.



**Winch :**

Ref No.	AFT730040
Length	40m

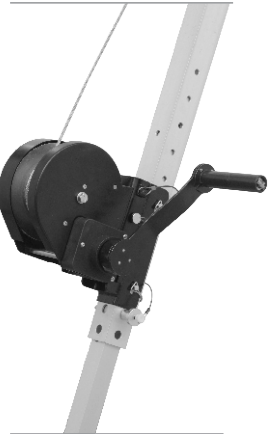
- To be used for raising or lowering of a person or material into confined spaces.
- Comes with pre-installed mounting plate compatible with the mounting bracket fixed on the leg of the Tripod and can also be fitted to Extreme Davit Systems
- Comes with Galvanized Steel wire rope of dia 4.5mm.
- Maximum lifting load capacity as per EN 1496 : 140 kgs as per machinery directive 2006/42/EC : 250 kgs.
- Consists of Screw Locking Karabiner (AFC601100) as a Connector.
- Conforms to EN 1496:2017 (Class A).
- Must be used with a Retractable Fall Arrest Block when using as a Personal Winch raising or lowering.
- Also available with the Stainless Steel Wire.



**Winch :**

Ref No.	AFT730042
Length	20m

- To be used for raising or lowering of personnel or material into Confined spaces
- Comes with pre-installed mounting plate compatible with the mounting bracket fixed on the leg of the Tripod and can also be fitted to Extreme Davit Systems.
- Comes with Galvanized Steel wire rope of dia 4.5mm
- Consists of Swivel steel snap hook as a connector
- Maximum lifting load capacity as per EN 1496:135 kgs as per machinery directive 2006/42/EC : 250 kgs
- Conforms to EN 1496:2017 (Class B)
- To be used with Retractable fall arrester when deployed for raising or lowering of person
- Also available with SS Wire Rope instead of GI (AFT730042SS).



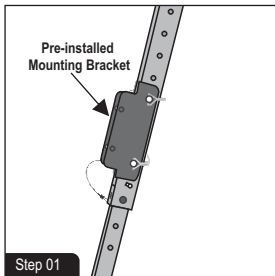
**Winch :**

Ref No.	AFT730120, AFT730135
Length	20m , 35M

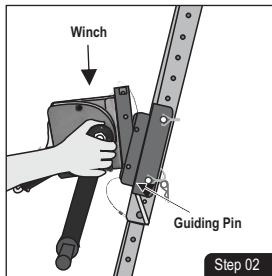
- To be used for raising or lowering of personnel or material into confined spaces
- Comes with pre-installed mounting plate compatible with the mounting bracket fixed on the leg of the Tripod and can also be fitted to Extreme Davit Systems
- Comes with Galvanized Steel wire rope of dia 6mm
- Consists of Swivel steel snap hook as a connector.
- Maximum lifting load capacity as per EN 1496:140 kgs
- Maximum lifting load capacity as per machinery directive 2006/42/EC:250 kgs
- Conforms to EN 1496:2017 (Class B)
- Also available with the Stainless Steel Wire.



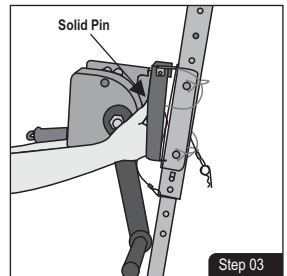
**3. INSTRUCTIONS FOR INSTALLATION OF WINCH AFT730020 ON TRIPOD (AFT710007/AFT710010)**



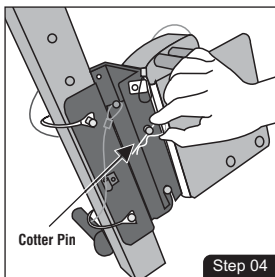
Locate the tripod leg that has pre-installed mounting bracket for installing the winch.



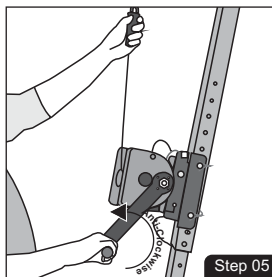
Place the winch on the mounting bracket of the tripod leg and insert the guiding pin into the slot.



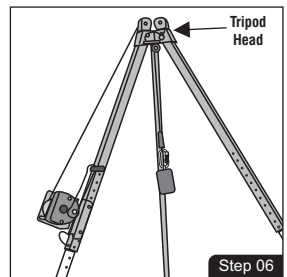
Use solid pin for locking the winch on pre-installed mounting bracket of tripod leg.



Lock the solid pin on mounting brackets using cotter pin.

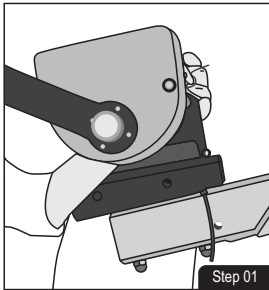


Pull out the handle of the winch outside and rotate it anti-clockwise to release the steel wire. Keep on releasing till you are able to release enough length such that it can pass over the pulleys of the tripod and get suspended vertically downwards.

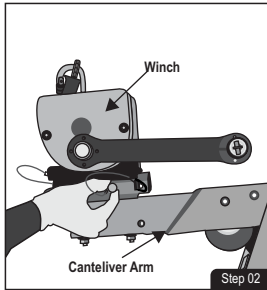


Winch is installed and now the tripod is ready for its claimed usage.

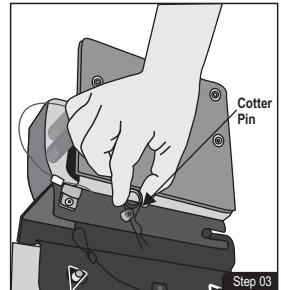
**4. INSTRUCTIONS FOR INSTALLATION OF WINCH AFT730020 ON EXTREME STAINLESS DAVIT (AFT7500)**



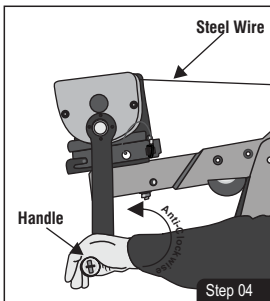
Locate the Extreme Stainless Davit arm that has pre-installed mounting bracket for installing the winch. Place the winch on the mounting bracket of the Extreme Stainless Davit arm and insert the guiding pin into the slot.



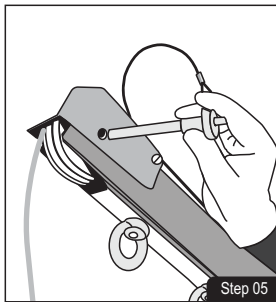
Use solid pin for locking the winch on pre-installed mounting bracket of Extreme Stainless Davit Arm.



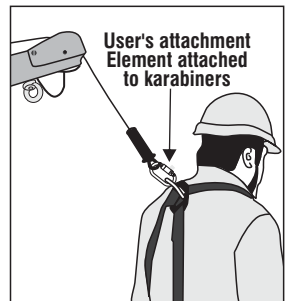
Lock the solid pin on mounting brackets using cotter pin.



Pull out the handle of the winch outside and rotate it anti-clockwise to release the steel wire. Keep on releasing till you are able to release enough length such that it can pass over the pulleys of the Extreme Stainless Davit and get suspended vertically downwards.



Pass the wire to the pulley as required and insert the pin back to lock the Rope Movement. Extreme Stainless Davit is now ready to use.



**5. ADVICE & INFORMATION:**

- It should not be used in highly acidic or basic environment.
- Ensure that the Tripod on to which the winch is fitted is strong enough to withstand a load of 13.5 kN.
- Ensure that the equipment is compatible with other items when assembled into a system.

**6. WARNING:**

- Ensure that the Medical condition of the user does not affect his safety in normal and emergency use.
- The equipment shall only be used by a person trained and competent in its safe use.
- A rescue plan shall be in place to deal with any emergencies that could arise during the work.
- Do not make any alterations or additions to the equipment without the manufacturer's prior written consent and that any repair shall only be carried out by personnel trained by the manufacturer & duly authorized by him.
- The equipment shall not be used outside its limitation, or for any purpose other than that for which it is intended.

7. **INSPECTION:** Visually inspect the system before each use to ensure that it is in a serviceable condition and is operating correctly. If during inspection, doubts are raised about the safety of the system or a component, these should be replaced either by the manufacturer or a competent person.
8. **STORAGE AND TRANSPORT:** When not in use, store the winch away from heavily acidic or basic environment; Never place heavy items on top of it. Also ensure that it is stored away from chemically hazardous environment preferably storage should be in dry environment.
9. **REPAIR:** If the product becomes damaged, it will NOT provide optimum level of performance, and therefore should be immediately removed from service. Never use the damaged product. Repair is permitted, provided that it is either done by the manufacturer or a competent repair center or individual approved by the manufacturer.
10. **CLEANING:** In case of minor soiling, wipe the winch with cotton cloth or a soft brush. Do not use any abrasive material. For intensive cleaning wash in water at a temperature between 30°C to 60°C by using a neutral detergent (pH 7). The washing temperature should not exceed 60°C. Do not use acidic or basic detergents. Cleaning and maintenance shall only be conducted in a safe area.

## MARKING

AFT730020

**KSTRONG**  
UNRIVALED SAFETY.  
WINCH  
AFT730020

UID:  
XXXXXXXXXXXX

Max. Length:  
20.0 mtrs

Norm:  
EN 1496:2017  
Class A

Mfg. Dt.:  
mm/yyyy

Rated Load:  
As per  
EN1496:2017:  
140kgs

As per Machine  
Directive  
2006/42/EC :  
250kgs

Read the  
User Instruction  
Manual Before Use

II 2G  
Ex h IIC T6 Gb  
EN 80079-36:2016  
EN 80079-37:2016

QR CODE

KStrong Inc.  
150 N. Radnor Chester Road  
Suite F200 Radnor,  
Pennsylvania 19087 United States  
KStrong.com Made In India

AFT730040

**KSTRONG**  
UNRIVALED SAFETY.  
WINCH  
AFT730040

UID: XXXXXXXXXXXX

Max. Length: 40.0 mtrs

Norm: EN 1496:2017 Class A

Mfg. Dt.: mm/yyyy

Rated Load:  
As per EN1496:2017: 140kgs

As per Machine Directive  
2006/42/EC : 250kgs

Read the User Instruction  
Manual Before Use

II 2G  
Ex h IIC T6 Gb  
EN 80079-36:2016  
EN 80079-37:2016

QR CODE

KStrong Inc.  
150 N. Radnor Chester Road  
Suite F200 Radnor,  
Pennsylvania 19087 United States  
KStrong.com Made In India

AFT730120

**KSTRONG**  
UNRIVALED SAFETY.  
PERSONAL WINCH  
AFT730120

Max. Length : 20.0 mtrs

Norm : EN 1496:2017 Class B

Mfg. Dt. : xxxxxx

UID : XXXXXXXXXXXXX

Rated Load : As per EN 1496 : 140kgf

As per Machine Directive 2006/42/EC : 250 kgf

Read User's Manual Carefully Before Use

QR CODE

II 2G  
Ex h IIC T6 Gb  
EN 80079-36:2016  
EN 80079-37:2016

KStrong Asia Pte Ltd  
33A Chander Road, Singapore 219539  
KStrong.com Made In India

AFT730135

**KSTRONG**  
UNRIVALED SAFETY.  
PERSONAL WINCH  
AFT730135

Max. Length : 35.0 mtrs

Norm : EN 1496:2017 Class B

Mfg. Dt. : xxxxxx

UID : XXXXXXXXXXXXX

Rated Load : As per EN 1496 : 140kgf

As per Machine Directive 2006/42/EC : 250 kgf

Read User's Manual Carefully Before Use

QR CODE

II 2G  
Ex h IIC T6 Gb  
EN 80079-36:2016  
EN 80079-37:2016

KStrong Asia Pte Ltd  
33A Chander Road, Singapore 219539  
KStrong.com Made In India

AFT730042(SS)

**K-STRONG®**  
UNRIVALED SAFETY.  
**WINCH**      **AFT730042SS**

**General Winch Operator Instructions:**  
To your personal use, you must read and understand the manufacturer's manual or have the instructions explained to you before using this product.  
Visually inspect the winch and cable as instructed in the manual before each use. If defects are found, remove winch from service using lock out/tagout procedure and inform your authorized person.  
Keep tension on cable at all times. If cable becomes bunched and/or sagged, fully extend and re-spool cable onto the drum before use.  
Maintain a minimum 3in. of cable on the winch drum at all times. Reversing the cable winding direction on the drum can result in injury or death.  
Any alteration or misuse of this equipment can result in injury or death.  
Keep tension on cable at all times. If cable becomes bunched and/or sagged, fully extend and re-spool cable onto the drum before use.

**WARNING**  
**Annual Inspection: Winch must be inspected by competent person every six months at a minimum.**  
All risk of personal injury, death or property damage occurring after the expiration date shown, shall be completely assumed by the user. The user releases K-STRONG, its employees and agents from all liability for any such personal injury, death and property damage occurring after the expiration date shown. Contact authorized personnel for details on winch program before sending winch back for servicing.

**ANY ALTERATION, ABUSE OR MISUSE OF THIS PRODUCT VIOLATES THE WARRANTY.**

K-Strong Asia Pte Ltd  
33A Chandler Road,  
Singapore 219539

Made in India  
kstrong.com

**K-STRONG®**  
UNRIVALED SAFETY.

**Specifications:** Material: Cable - 4.5mm Galvanized Steel Wire Rope, Cable Length - 20m, Mechanical Advantage: 5:1:1, Material of Body: Zinc Plated Steel

EN 1498:2017 Class B  
Rated Load : As per EN 1498  
As per Machine Directive 2006/42/EC  
LD : XXXXXXXXXX

150 kg  
200 kg

**Precaution:**  
Before every use, user must inspect the product. Every 6 months a competent person must conduct full inspection of the product and accessories.

Year	Jan	Feb	Mar	Apr	May	Jun	Jul	Aug	Sep	Oct	Nov	Dec
2018												
2019												
2020												
2021												
2022												
2023												
2024												
2025												
2026												
2027												
2028												
2029												
2030												

**DOM:** \_\_\_\_\_

Made in India      kstrong.com

AFT730042

**K-STRONG®**  
UNRIVALED SAFETY.  
**WINCH**      **AFT730042**

**General Winch Operator Instructions:**  
To your personal use, you must read and understand the manufacturer's manual or have the instructions explained to you before using this product.  
Visually inspect the winch and cable as instructed in the manual before each use. If defects are found, remove winch from service using lock out/tagout procedure and inform your authorized person.  
Keep tension on cable at all times. If cable becomes bunched and/or sagged, fully extend and re-spool cable onto the drum before use.  
Maintain a minimum 3in. of cable on the winch drum at all times. Reversing the cable winding direction on the drum can result in serious injury or death.  
Any alteration or misuse of this equipment can result in serious injury or death.  
Keep tension on cable at all times. If cable becomes bunched and/or sagged, fully extend and re-spool cable onto the drum before use.

**WARNING**  
**Annual Inspection: Winch must be inspected by competent person every six months at a minimum.**  
All risk of personal injury, death or property damage occurring after the expiration date shown, shall be completely assumed by the user. The user releases K-STRONG, its employees and agents from all liability for any such personal injury, death and property damage occurring after the expiration date shown. Contact authorized personnel for details on winch program before sending winch back for servicing.

**ANY ALTERATION, ABUSE OR MISUSE OF THIS PRODUCT VIOLATES THE WARRANTY.**

K-Strong Asia Pte Ltd  
33A Chandler Road,  
Singapore 219539

Made in India  
kstrong.com

**K-STRONG®**  
UNRIVALED SAFETY.

**Specifications:** Material: Cable - 4.5mm Galvanized Steel Wire Rope, Cable Length - 20m, Mechanical Advantage: 5:1:1, Material of Body: Zinc Plated Steel

EN 1498:2017 Class B  
Rated Load : As per EN 1498  
As per Machine Directive 2006/42/EC  
LD : XXXXXXXXXX

150 kg  
200 kg

**Precaution:**  
Before every use, user must inspect the product. Every 6 months a competent person must conduct full inspection of the product and accessories.

Year	Jan	Feb	Mar	Apr	May	Jun	Jul	Aug	Sep	Oct	Nov	Dec
2018												
2019												
2020												
2021												
2022												
2023												
2024												
2025												
2026												
2027												
2028												
2029												
2030												

**DOM:** \_\_\_\_\_

Made in India      kstrong.com

**LIFESPAN:** The estimated product Lifespan is 10 years from the date of manufacture. The following factors can reduce the Lifespan of the product: intense use, contact with chemical substances, specially aggressive environments, extreme temperature exposure, UV exposure, abrasions, cuts, violent impacts, bad use or maintenance.

**DISCLAIMER:** Prior to use, the end user must read and understand the manufacturer's instructions supplied with this product at the time of shipment and seek training from their employer's trained personnel on the proper usage of the product. Manufacturer is not liable or responsible for any loss, damage or injury caused or incurred by any person on grounds of improper usage or installation of this product.

EQUIPMENT RECORD				
Product				
Model & type/Identification		Trade Name		Identification number
Manufacturer		Address		Tel, email into use
Year of manufacture		Purchase Date		Date first put into use
Other relevant information (eg. document number)				
PERIODIC EXAMINATION AND REPAIR HISTORY				
Date	Reason for entry (periodic examination or repair)	Defects noted, repairs carried out and other relevant information	Name and signature of competent person	Periodic examination next due date

**Certification Body :**

SATRA Technology Centre, Wyndham Way, Telford Way, Kettering,  
Northamptonshire, NN16 8SD, UK (Notified Body 0321)

For EU Declaration, please visit <https://kstrong.com/asia/eu-declaration-form/>



33A Chander Road, Singapore 219539  
Contact Email: [customer-care@kstrong.com](mailto:customer-care@kstrong.com)

[www.kstrong.com](http://www.kstrong.com)

USA	South America	ASIA
-----	---------------	------